



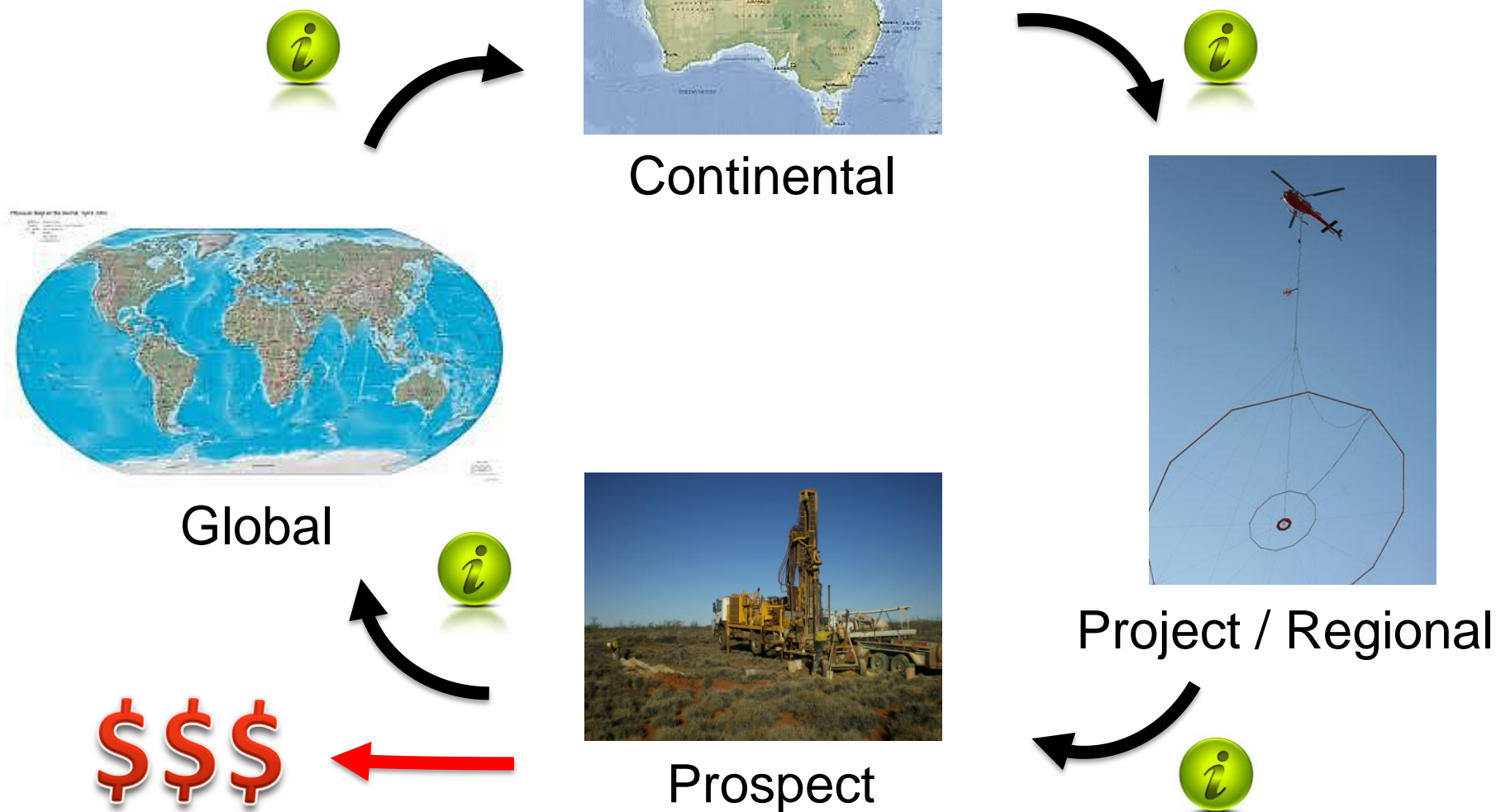
**encounter**  
RESOURCES LIMITED

# Footprints in the Great Sandy Desert

UNCOVER Summit – April 2014

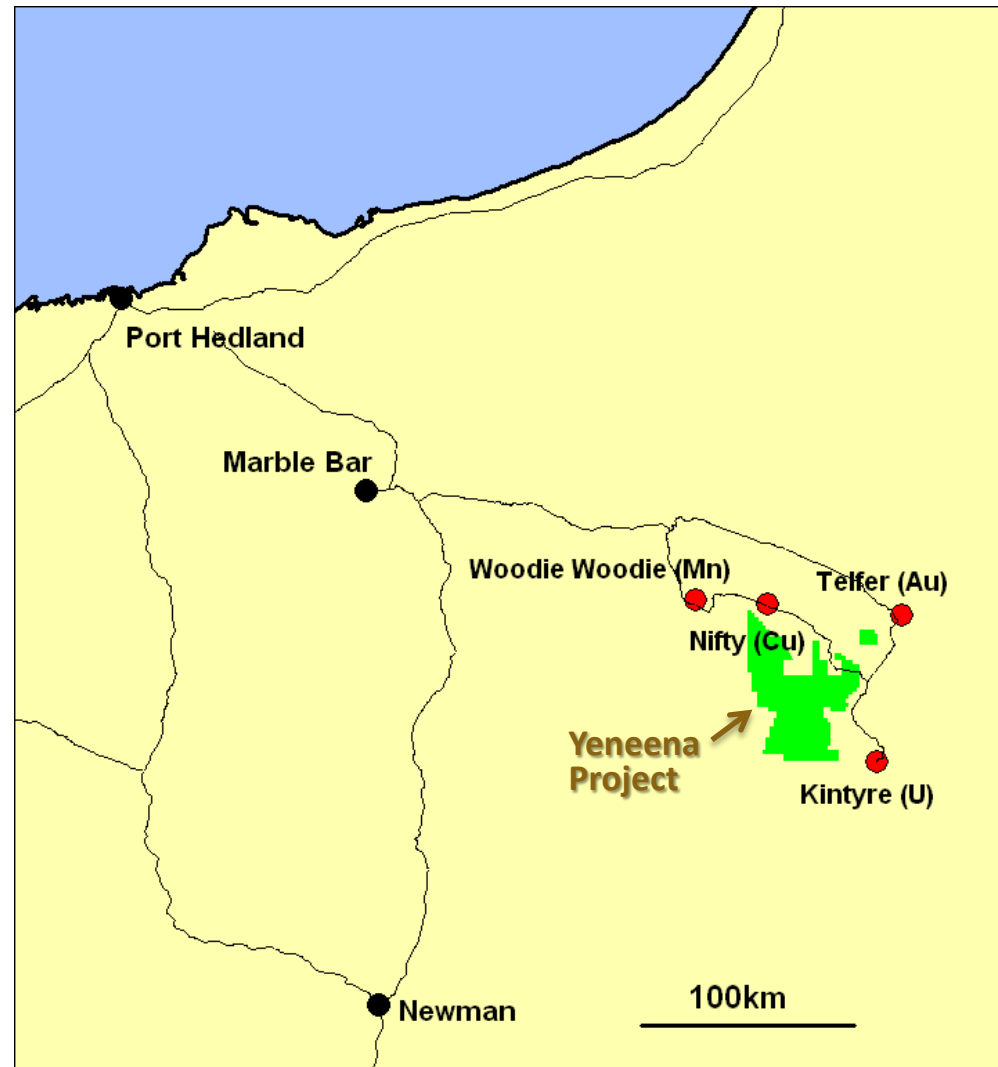
ASX : ENR

# GREENFIELDS EXPLORATION



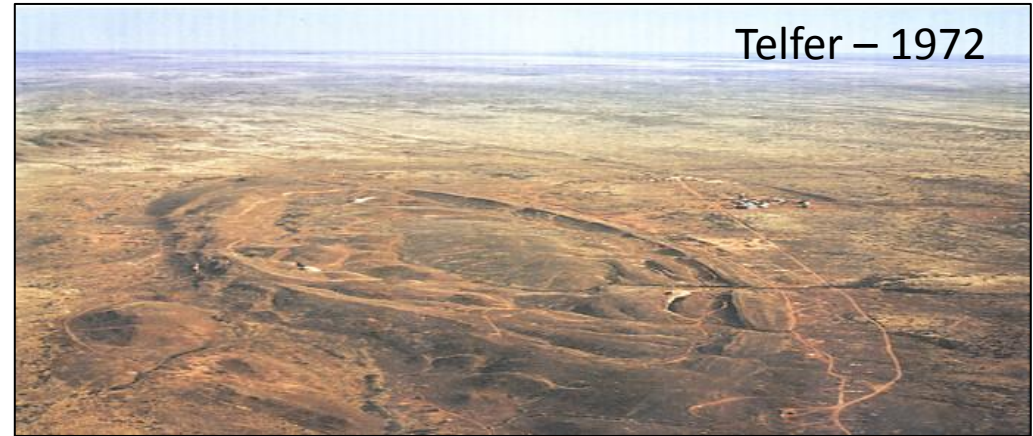
# INTRODUCTION

- Focus on greenfields, large scale metal discoveries
- Major land position in Proterozoic Yeneena sedimentary basin (1900km<sup>2</sup>)
- Surrounded by major mineral deposits (Au-Cu, Cu, U and Mn)





# HISTORICAL DISCOVERIES

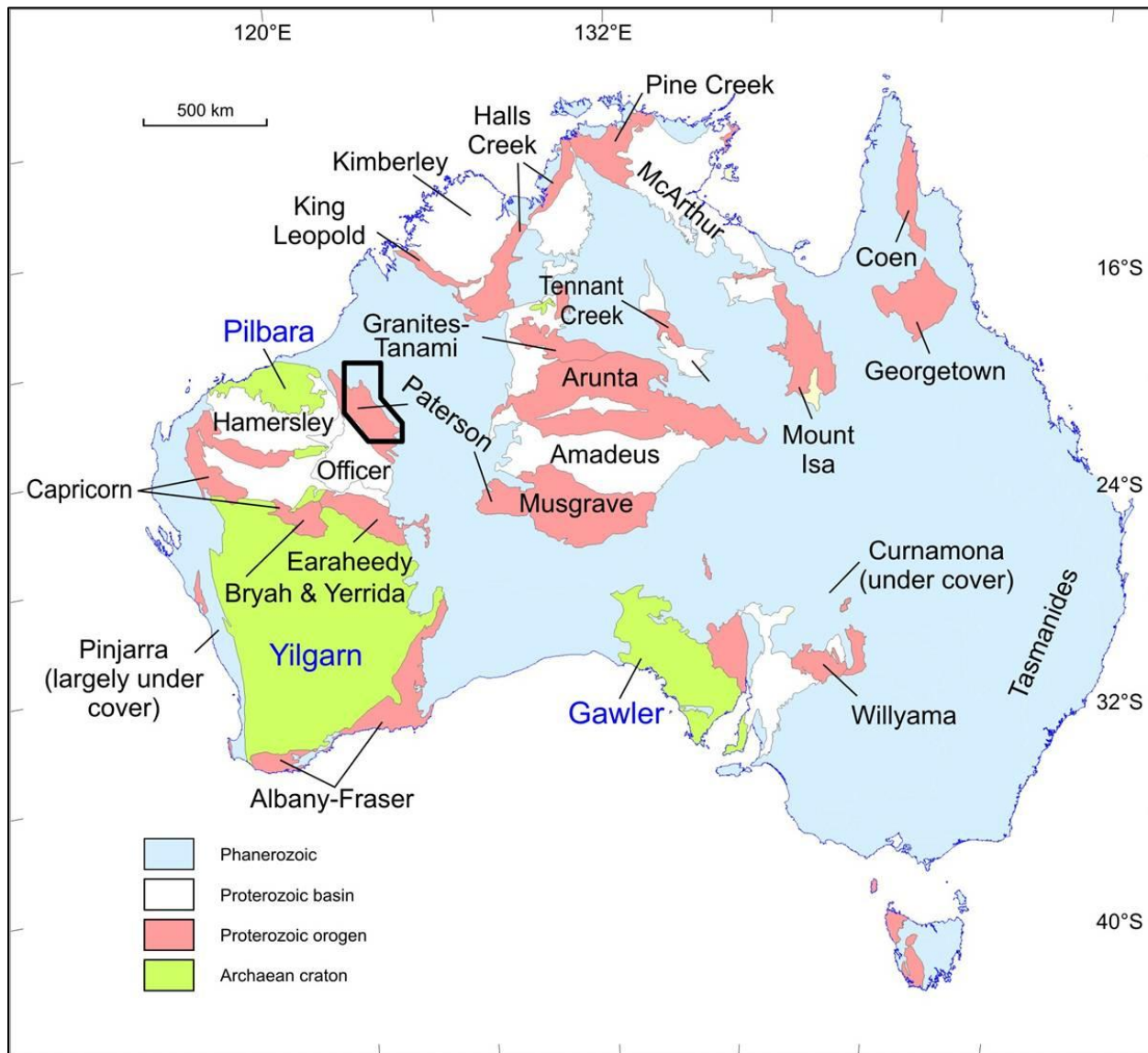




# THE OPPORTUNITY



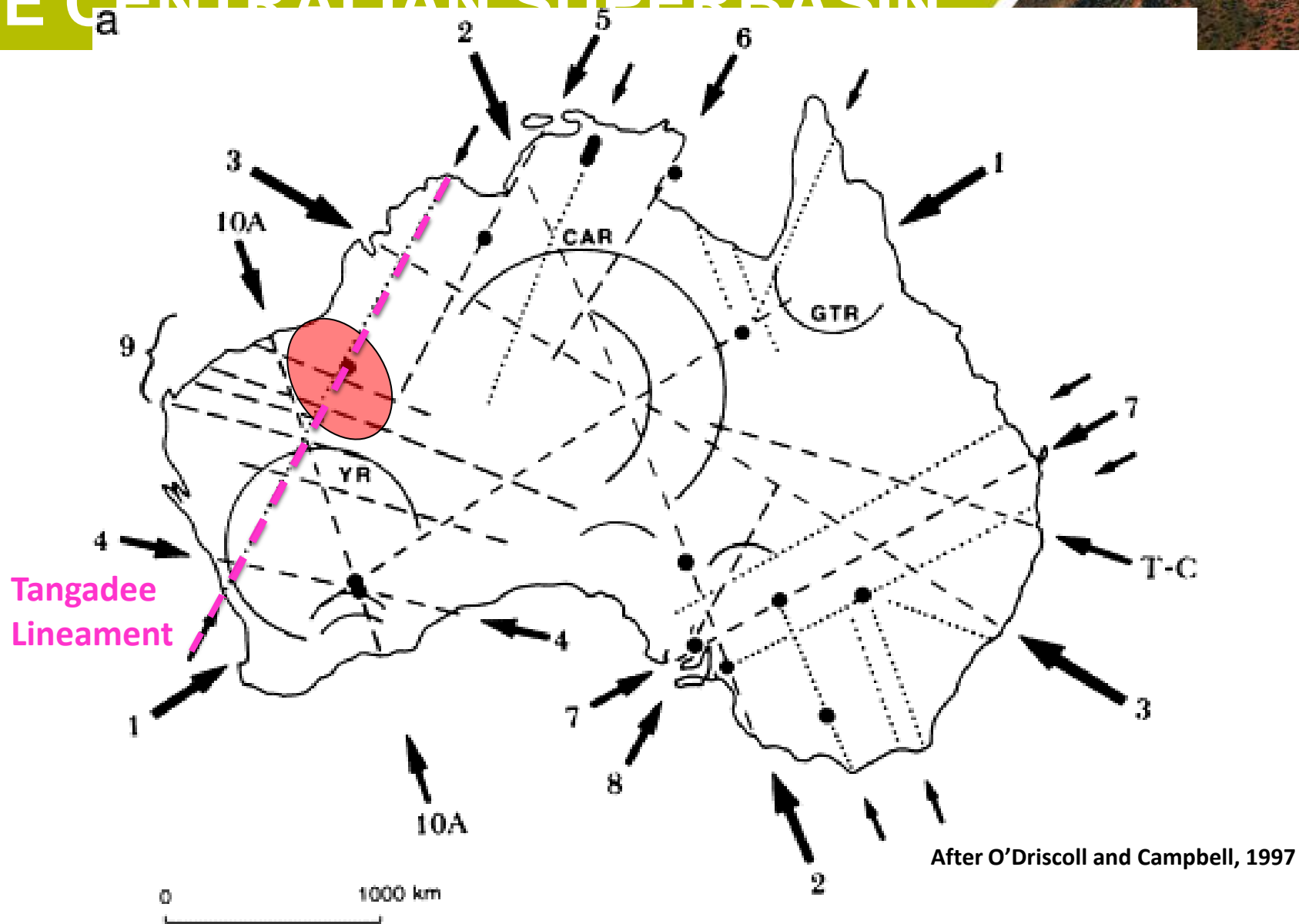
# CONTINENTAL-SCALE CONTEXT



Czarnota et al (2008)

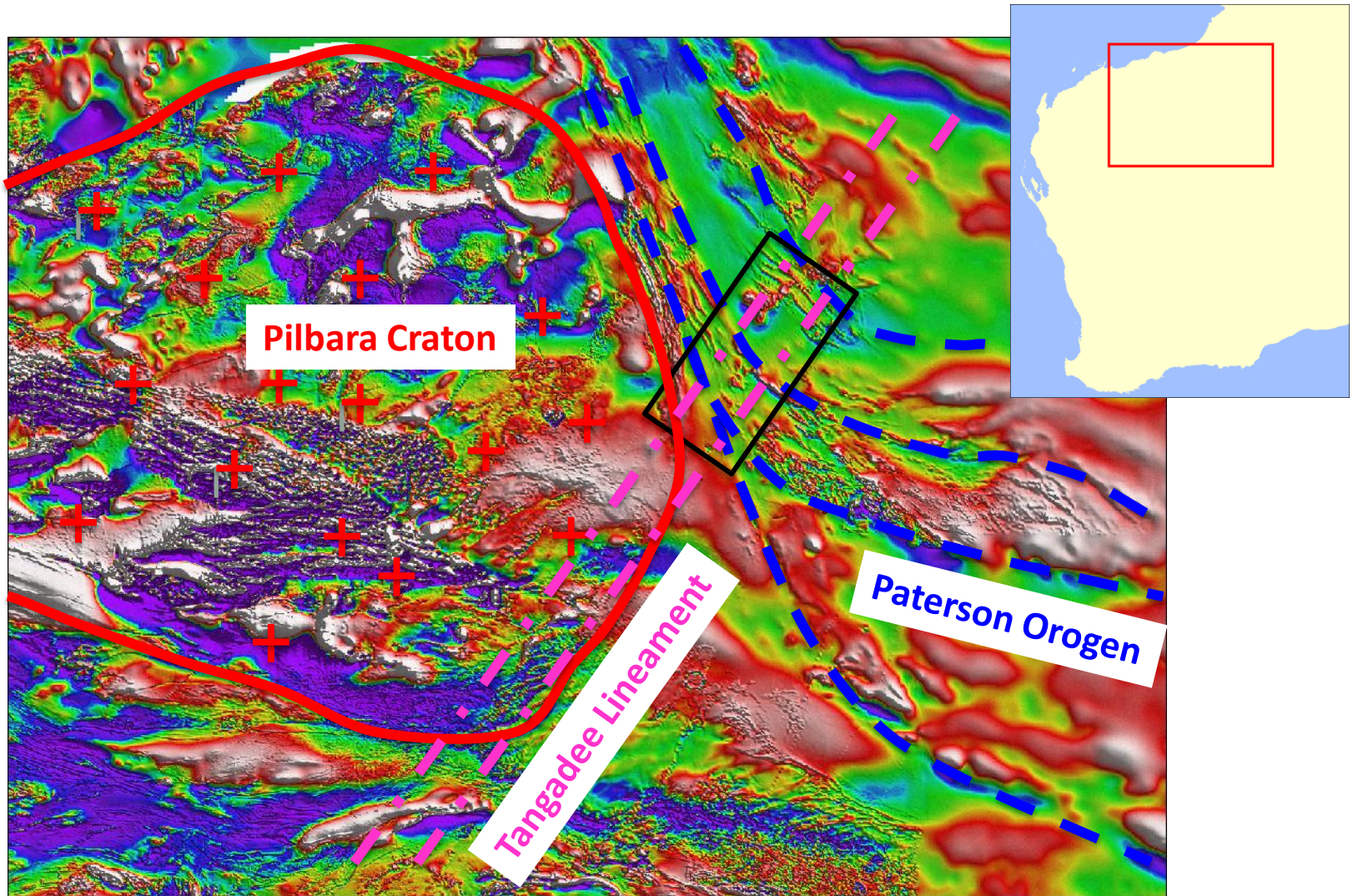


# THE CENTRALIAN SUPERBASIN



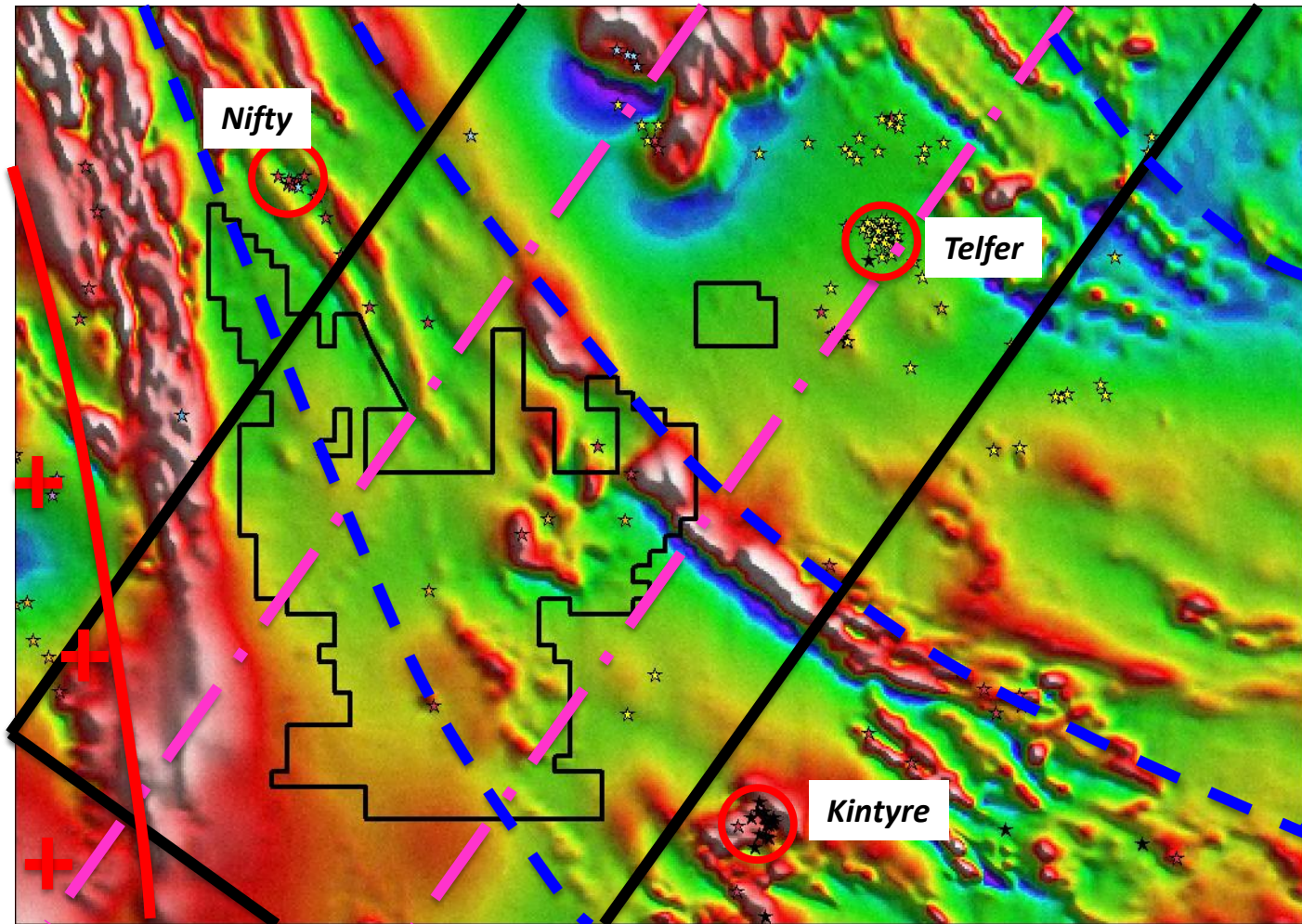


# REGIONAL TARGET SELECTION

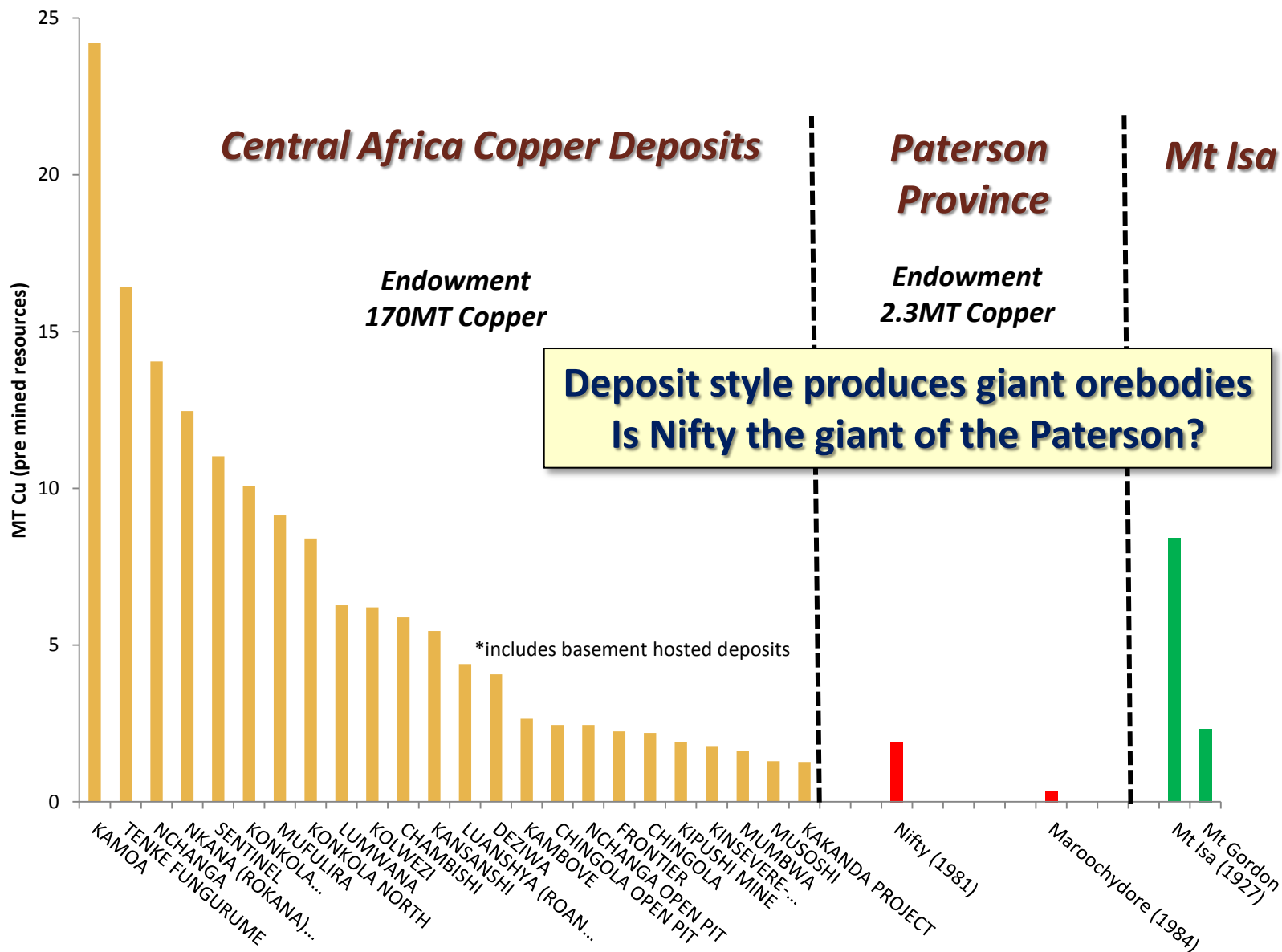




# REGIONAL TARGET SELECTION

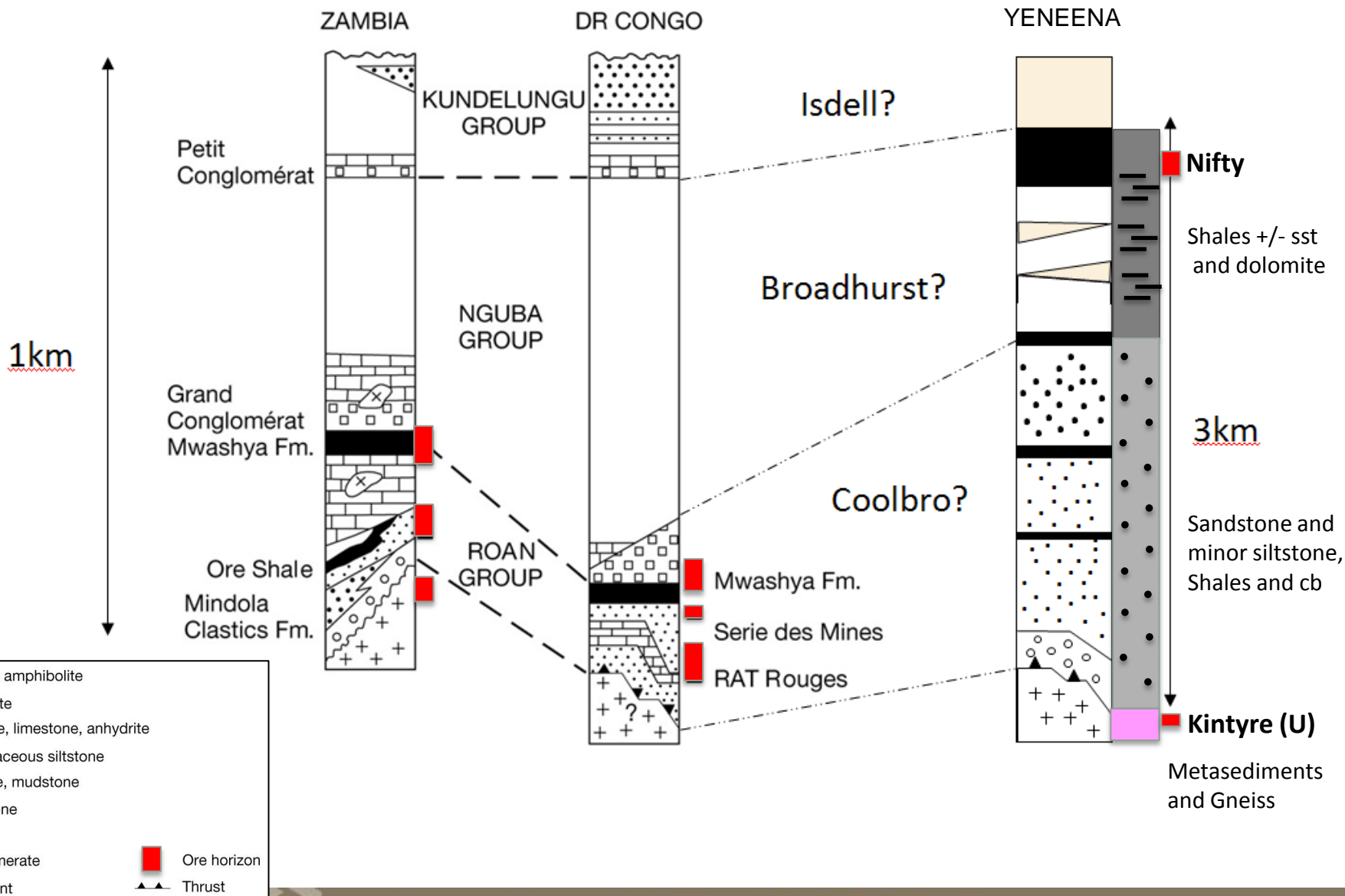


# WHY SEDIMENT HOSTED CU?





# CENTRAL AFRICAN COPPER



# GEOLOGICAL INTERP.

- Geological Domains

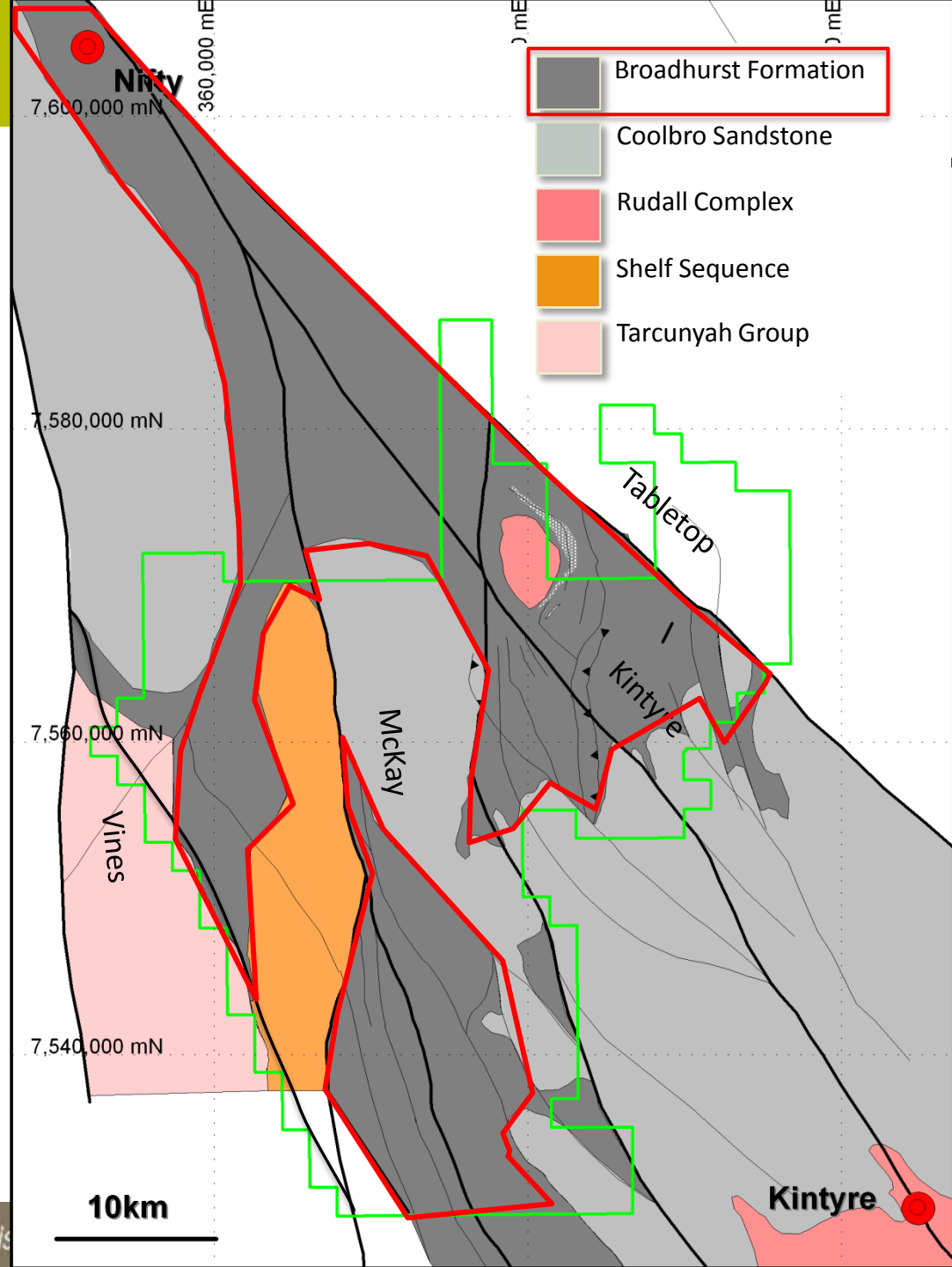
- Geophysical characterisation of geological units
- **AEM KEY effective dataset:** EM signatures of Coolbro Sst. vs Broadhurst vastly different

- Structural Framework

- AEM CDIs
- Breaks and drag folding in conductive flat-lying shales in Broadhurst Fmn

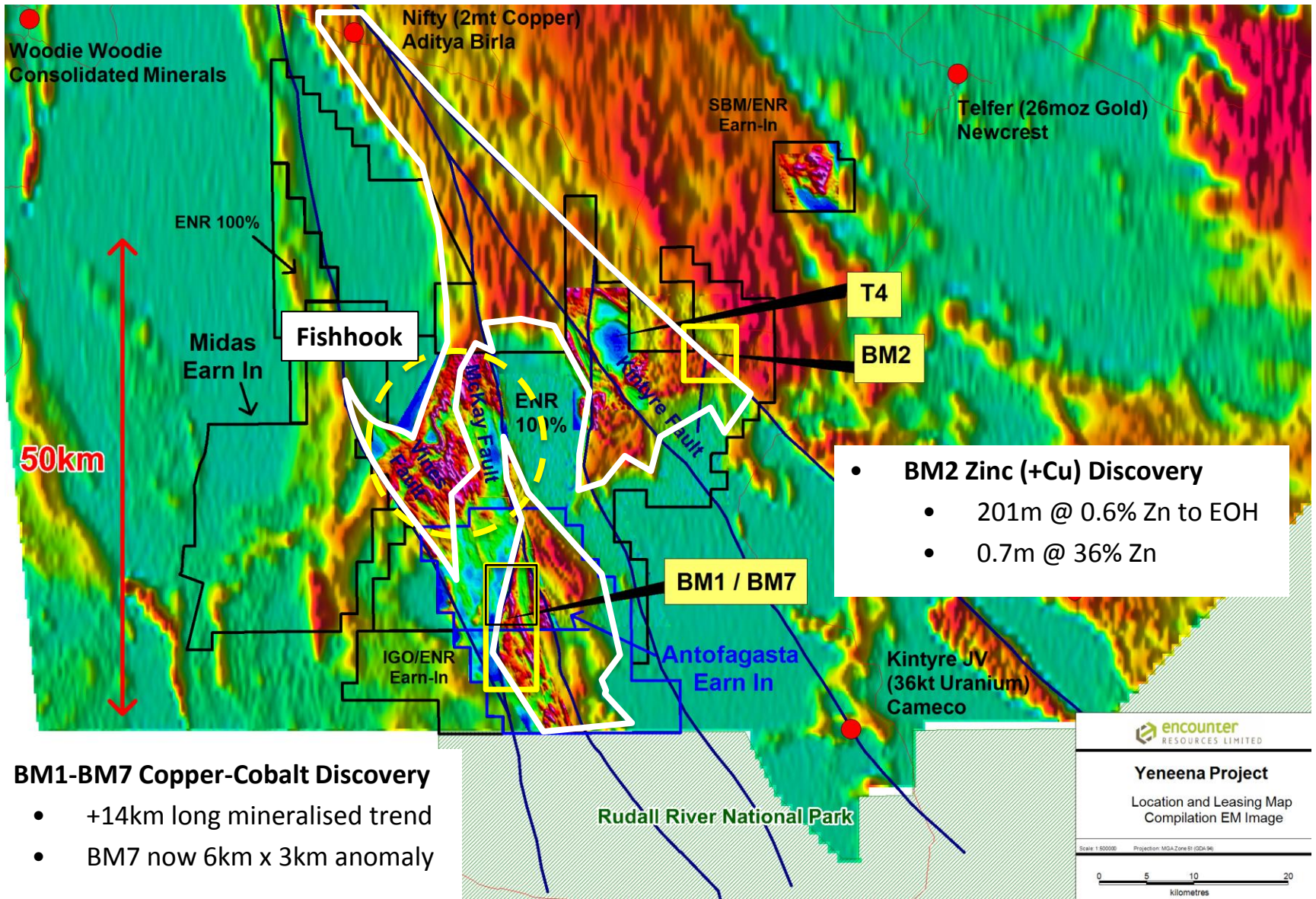
- Integration with independent datasets

- Gravity
- Magnetics
- GSWA Mapping
- EOH Geology



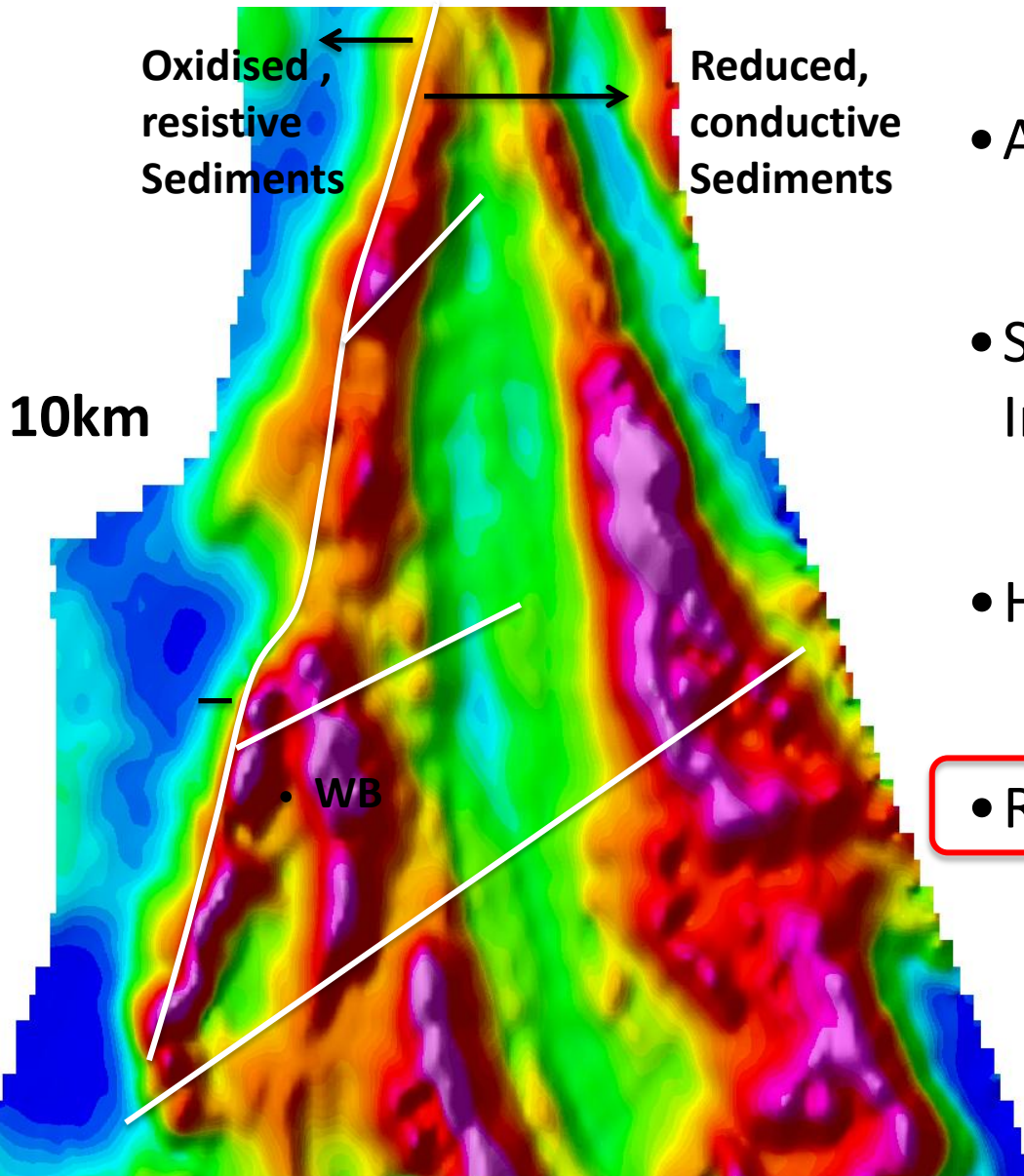


# TARGET GENERATION





# PROSPECT DEFINITION



- Airborne EM (VTEM)
- Structural / Geological Interpretation
- Historical Data Compilation
- Regolith Drilling (Aircore)



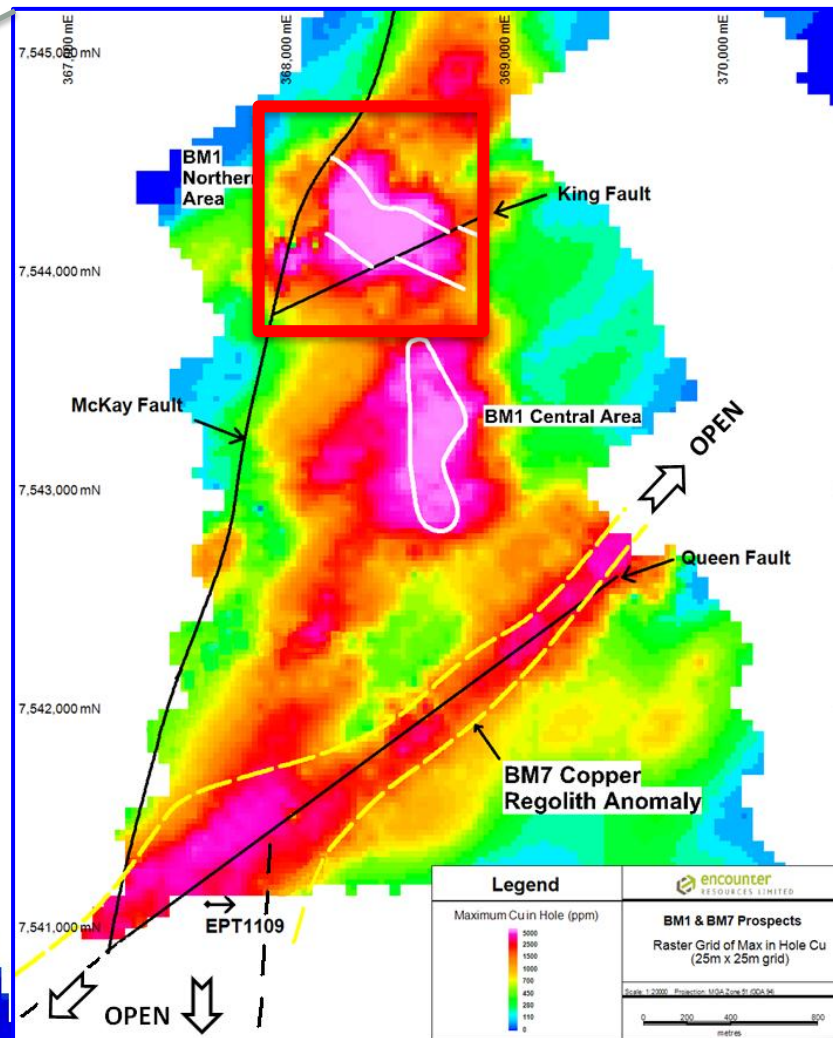


# LOTS OF AIRCORE DRILLING



# BM6 – BM1 – BM7 REGOLITH CU

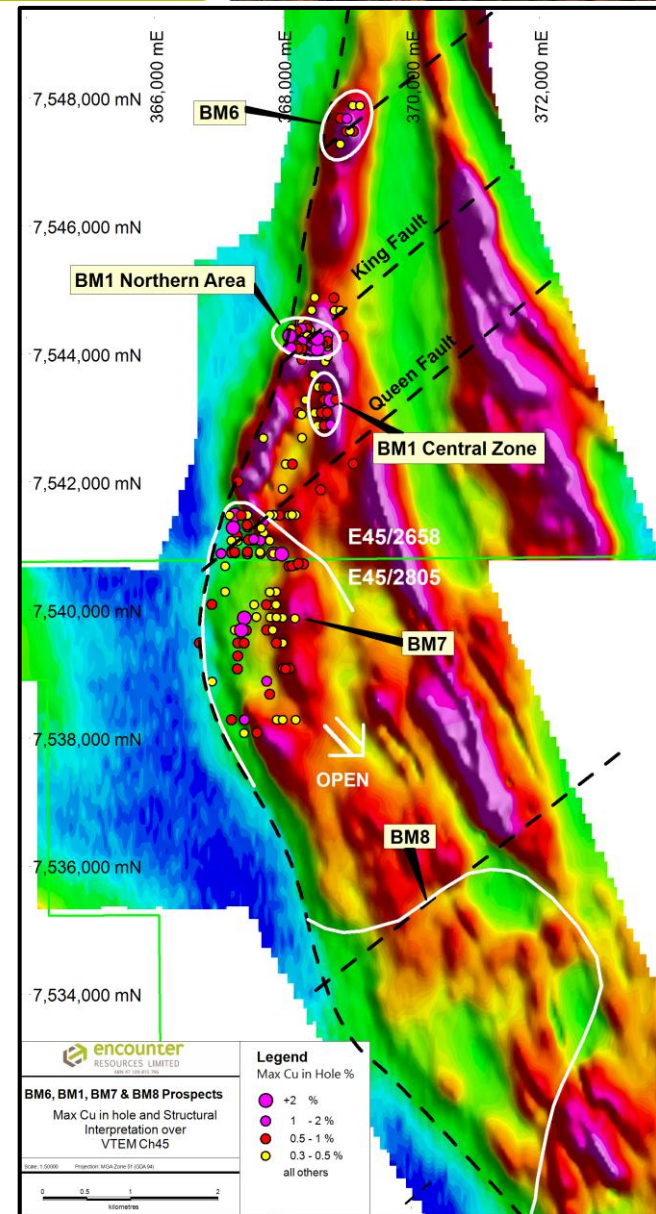
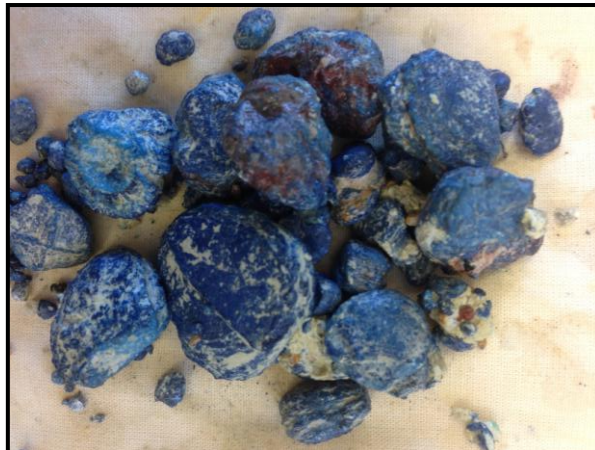
10km





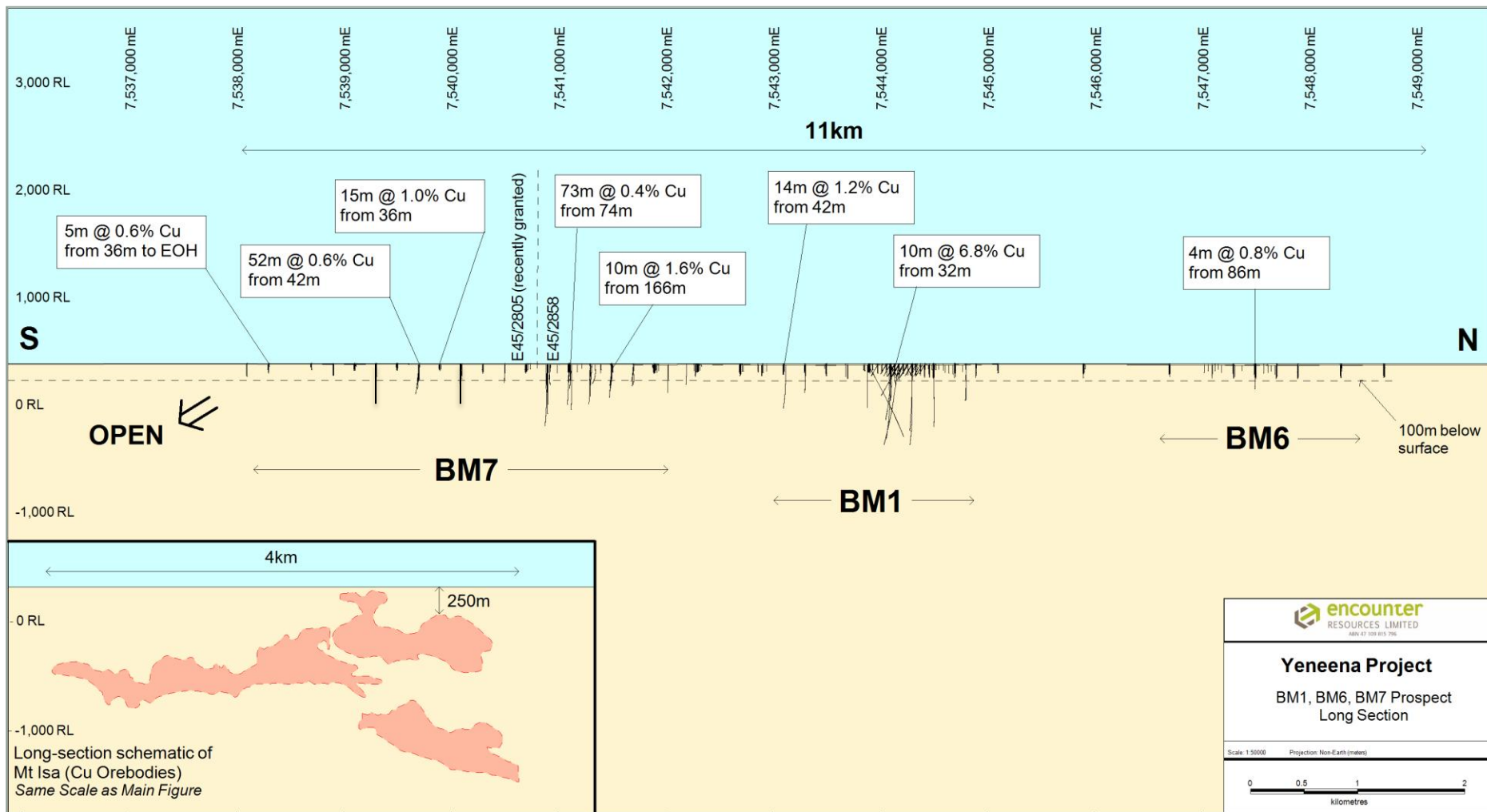
# BM1 - BM7 PROSPECTS

*Mineral system 14km long and growing*



# LONG SECTION BM6-BM1-BM7

*Shallow drilling defines major new Copper-Cobalt mineral system*

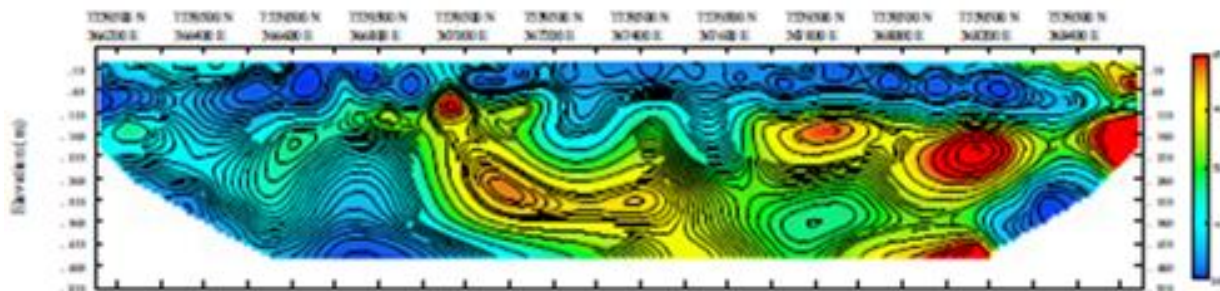


**Antofagasta farming-in**





# DIRECT DETECTION ?



- Partial Leach Geochemistry
- Ground EM
- Ground IP
- Detailed ground gravity

---

- Detailed Seismic
  
- AMT

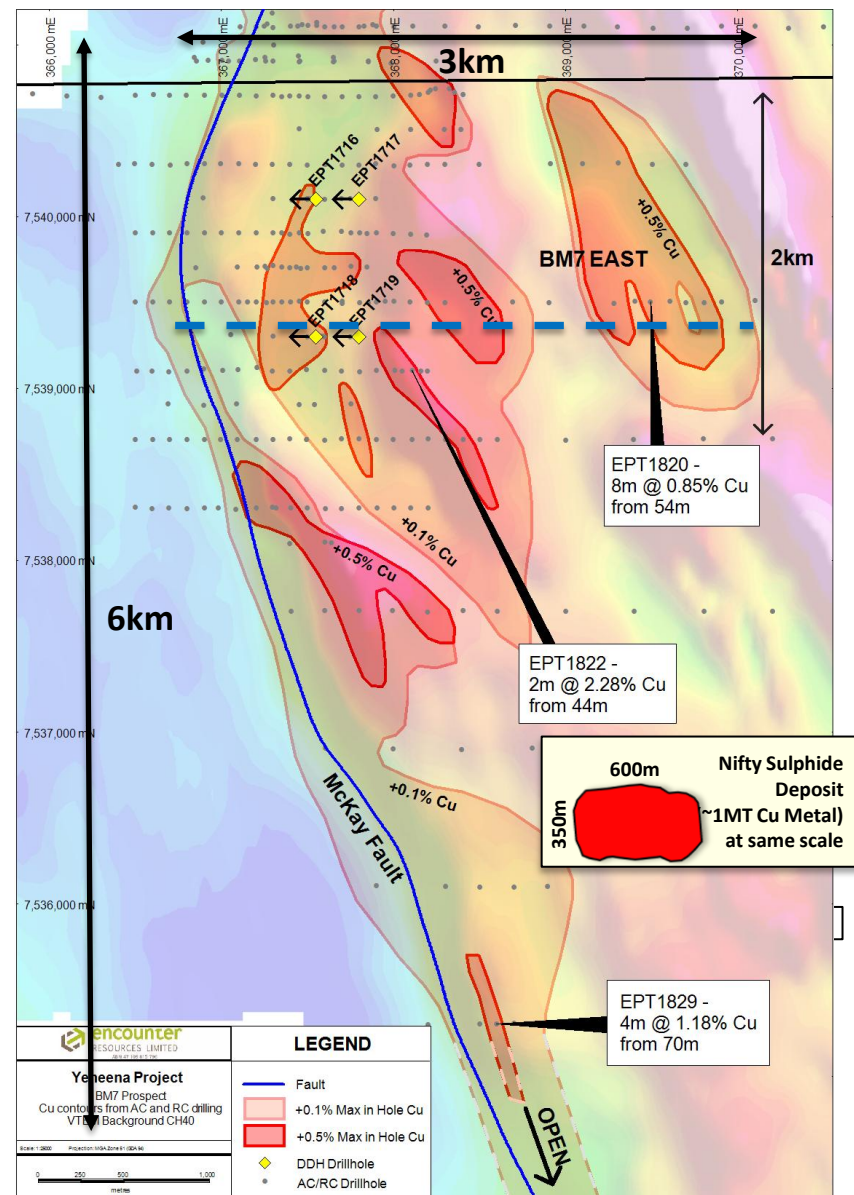


# BM7 2013 SUMMARY

## BM7 mineral system

- Regolith anomaly 6km in strike and up to 3km in width
- Generated specific new primary copper sulphide targets
- Extraordinary copper oxide footprint with high grade copper in the primary zone
- System remains open to the south and south east

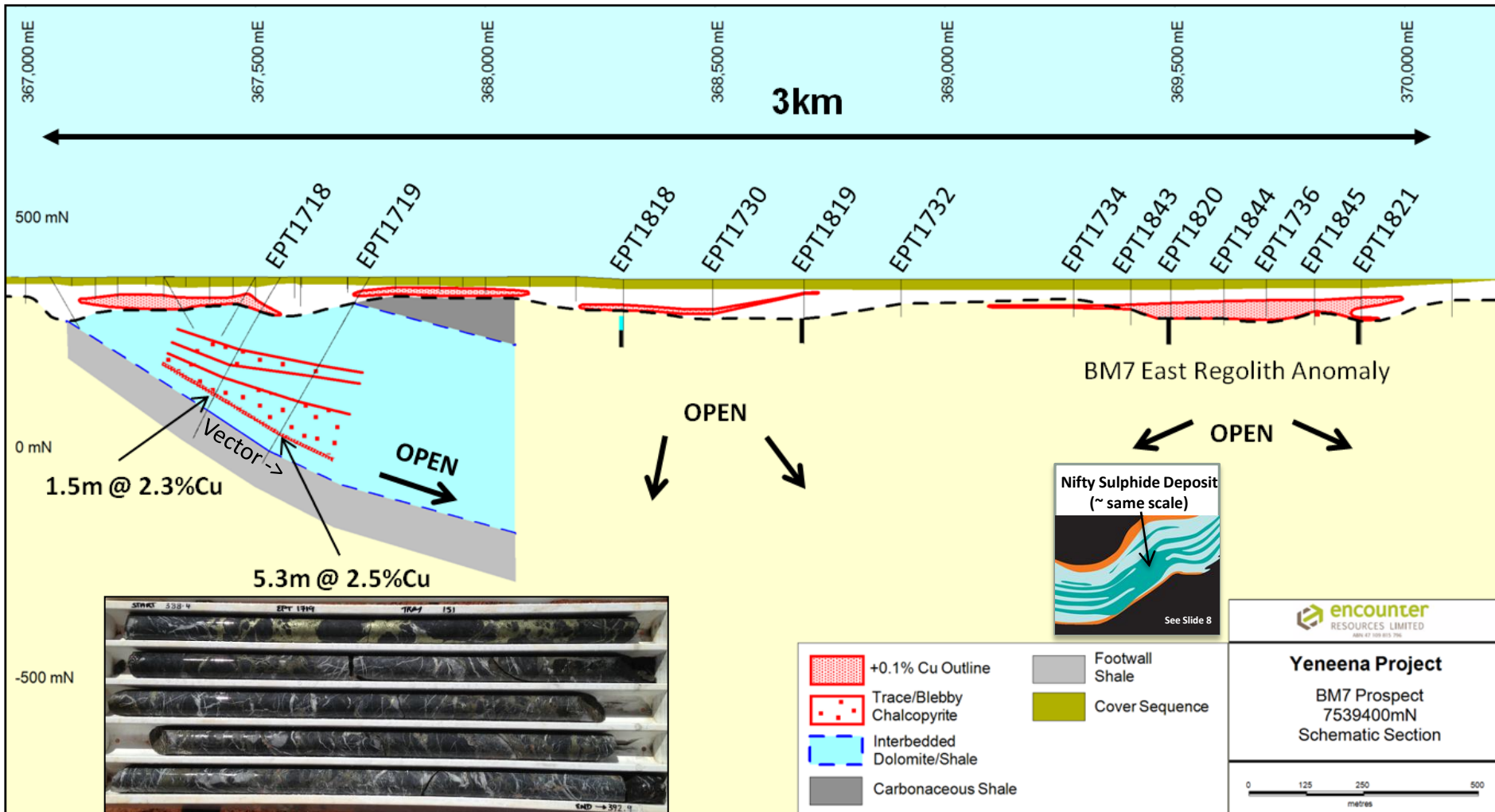
(refer ASX announcement 27 Nov 2013)





# BM7 SCHEMATIC SECTION A-A'

*Diamond drill program has confirmed depth extensive copper sulphide mineralisation and established the high grade potential of BM7 system*



## *Exploring the Yeneena for new copper systems*

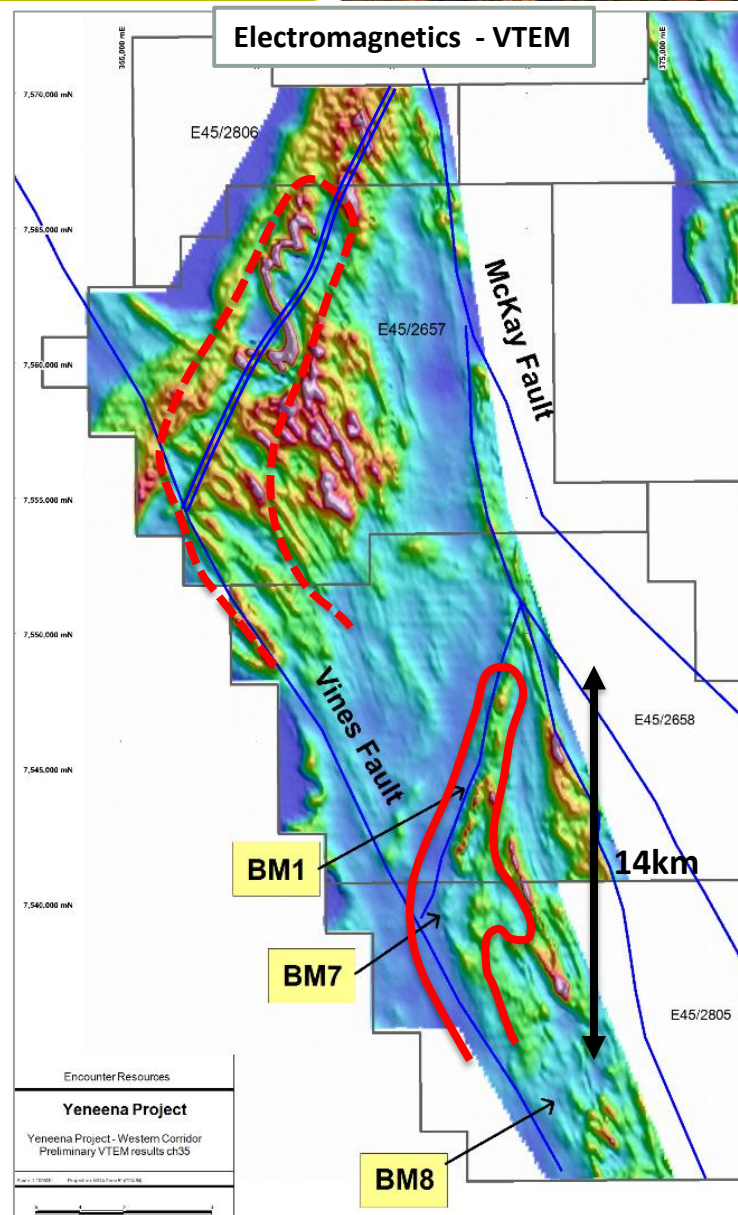
- Extensive cover of between 1 to 15m
- Detailed VTEM defined broad area of subdued conductance and key structural intersections
- Shallow regolith drilling highlights areas of interest
- EM, IP, Gravity, Magnetics or Surface Geochemistry has not delivered direct detection of high grade mineralisation
- Broad spaced drilling to allow structural targeting and define lithogeochemical vectors to high grade copper sulphides.



# REGIONAL COPPER TARGETS

## *Untested targets north of BM1-BM7*

- VTEM Survey completed
- Significant north-east trending structure that mirrors the BM1-BM7 copper system
- Shallow sand cover
- Minimal previous exploration – a handful of holes – anomalous in copper







***The End...***

***...The Beginning***